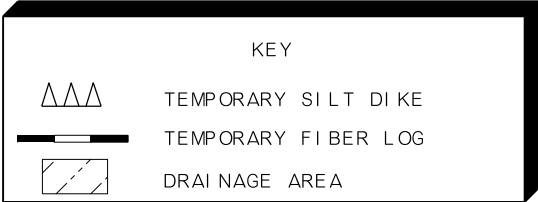
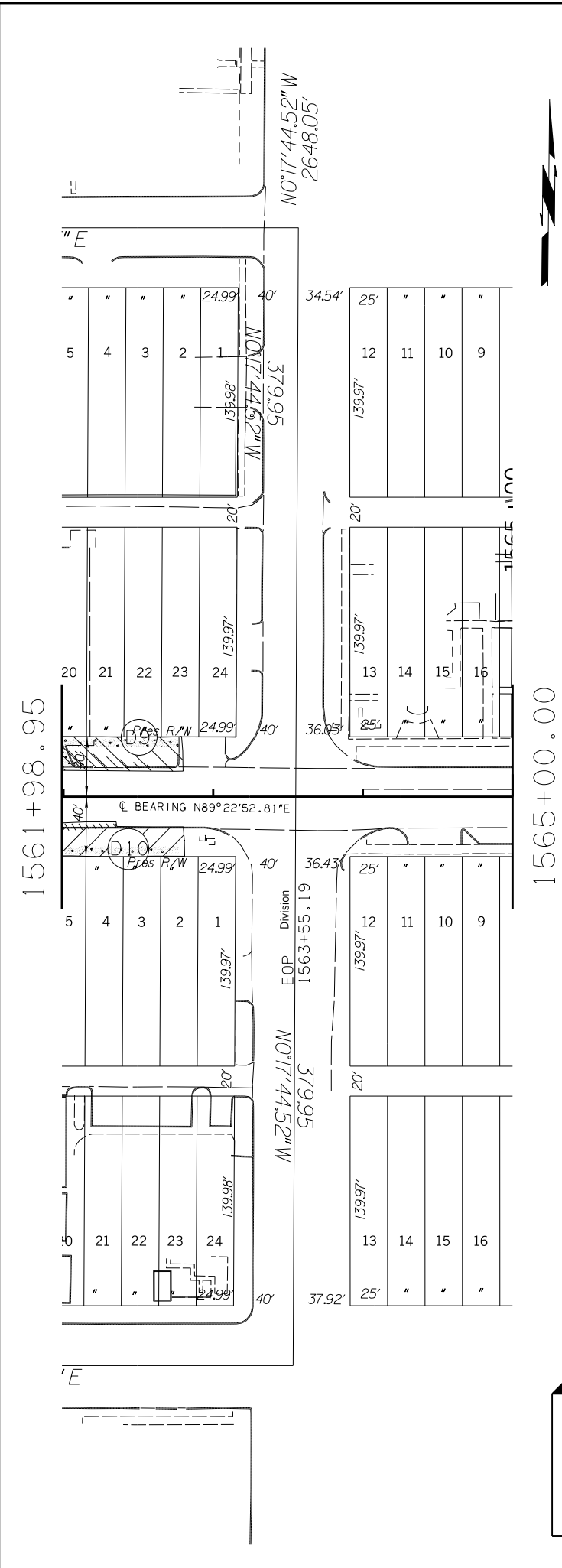


Y:\Division 4\21860(04)\P\erosion control reference\015-21860(04)-EROSION CONTROL DETAIL.dgn

08-19-16



SUMMARY OF DISTURBED DRAINAGE AREA				
DRAINAGE AREA NUMBER	OUTFALL STATION	SIDE	AREA	EROSION CONTROL TREATMENT
			AC.	
D1	1530+75.00	LT.	1.55	VEGETATIVE MULCH, SOLID SLAB SODDING & SILT DIKE
D2	1530+75.00	RT.	1.84	VEGETATIVE MULCH, SOLID SLAB SODDING & SILT DIKE
D3	1530+75.00	LT.	1.45	VEGETATIVE MULCH, SOLID SLAB SODDING & SILT DIKE
D4	1530+75.00	RT.	1.51	VEGETATIVE MULCH, SOLID SLAB SODDING & SILT DIKE
D5	1544+10.00	LT.	1.71	VEGETATIVE MULCH, SOLID SLAB SODDING & SILT DIKE
D6	1544+10.00	RT.	2.73	VEGETATIVE MULCH, SOLID SLAB SODDING & SILT DIKE
D7	1545+97.00 & 1551+00.00	LT.	1.38	VEGETATIVE MULCH, SOLID SLAB SODDING & SILT DIKE
D8	1545+97.00 & 1551+00.00	RT.	2.28	VEGETATIVE MULCH, SOLID SLAB SODDING & SILT DIKE
D9	1552+85.00	LT.	0.21	VEGETATIVE MULCH, SOLID SLAB SODDING & SILT DIKE
D10	1552+85.00	LT.	0.56	VEGETATIVE MULCH, SOLID SLAB SODDING & SILT DIKE
D11	1552+85.00	RT.	0.55	VEGETATIVE MULCH, SOLID SLAB SODDING & SILT DIKE
D12	1552+85.00	RT.	0.38	VEGETATIVE MULCH, SOLID SLAB SODDING & SILT DIKE
TOTALS			16.15	

DESIGN	MRB	1/16	OKLAHOMA DEPARTMENT OF TRANSPORTATION ROADWAY DESIGN DIVISION
DRAWN	MRB	1/16	
CHECKED			EROSION CONTROL DETAIL
APPROVED			
SQUAD	GREEN		
COUNTY	LOGAN CO.	HIGHWAY	SH-33
STATE JOB NO.		JP21860(04)	SHEET NO. R015